



Mamba-R
2019 Assembly Guide



Mamba-R

2019 Assembly Guide



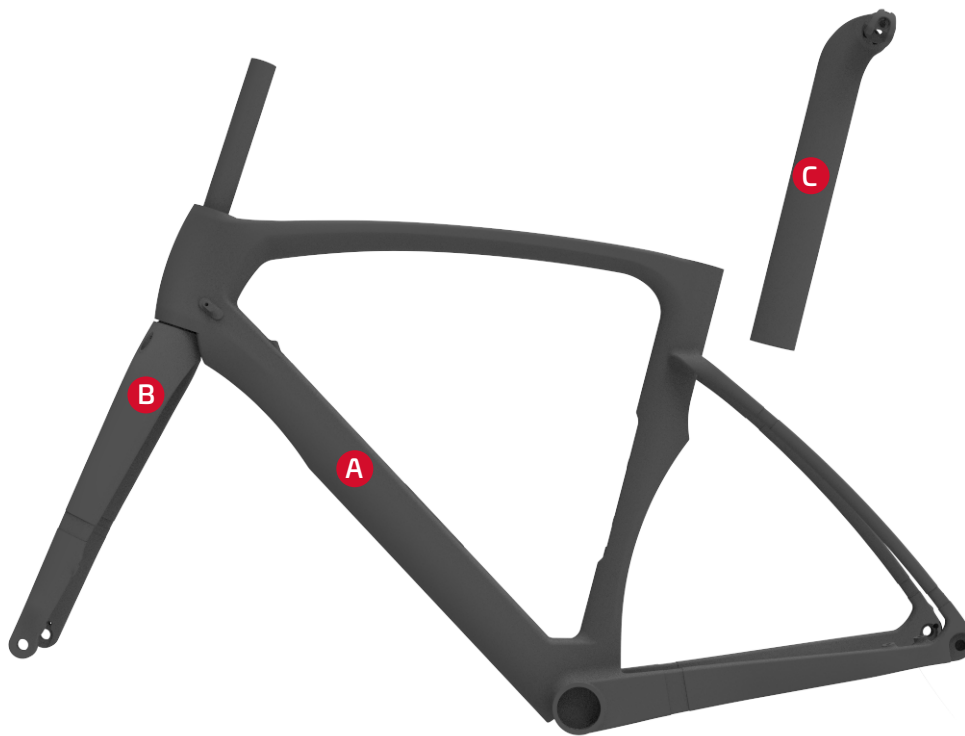


TABLE OF CONTENTS

1. Frameset Parts	4
2. Parts included in the BOX.....	5
3. Cables Map - Brakes.....	6
4. Cables Map - Mechanical.....	7
5. Cables Map - Electronic.....	8
6. Headset Installation	9
7. Seatpost Installation.....	10

Mamba-R

2019 Assembly Guide



1. Frameset Parts

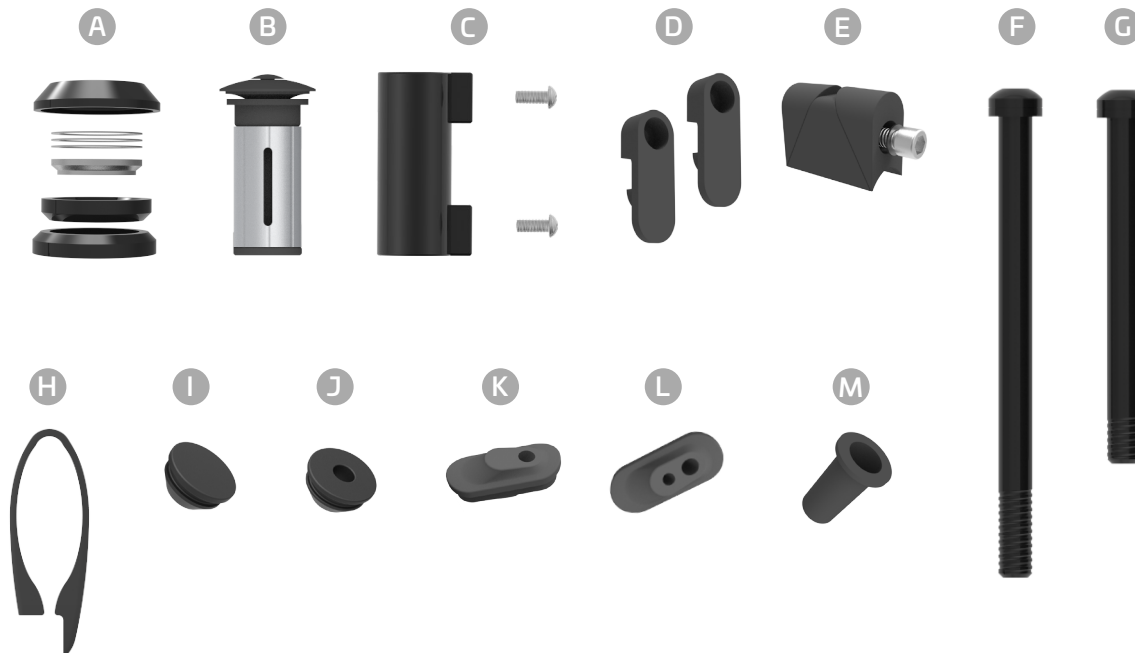
- A** 40T high-modulus carbon frame
- B** 40T high-modulus carbon Fork
- C** 40T high-modulus carbon Reversible Seatpost

Mamba-R

2019 Assembly Guide



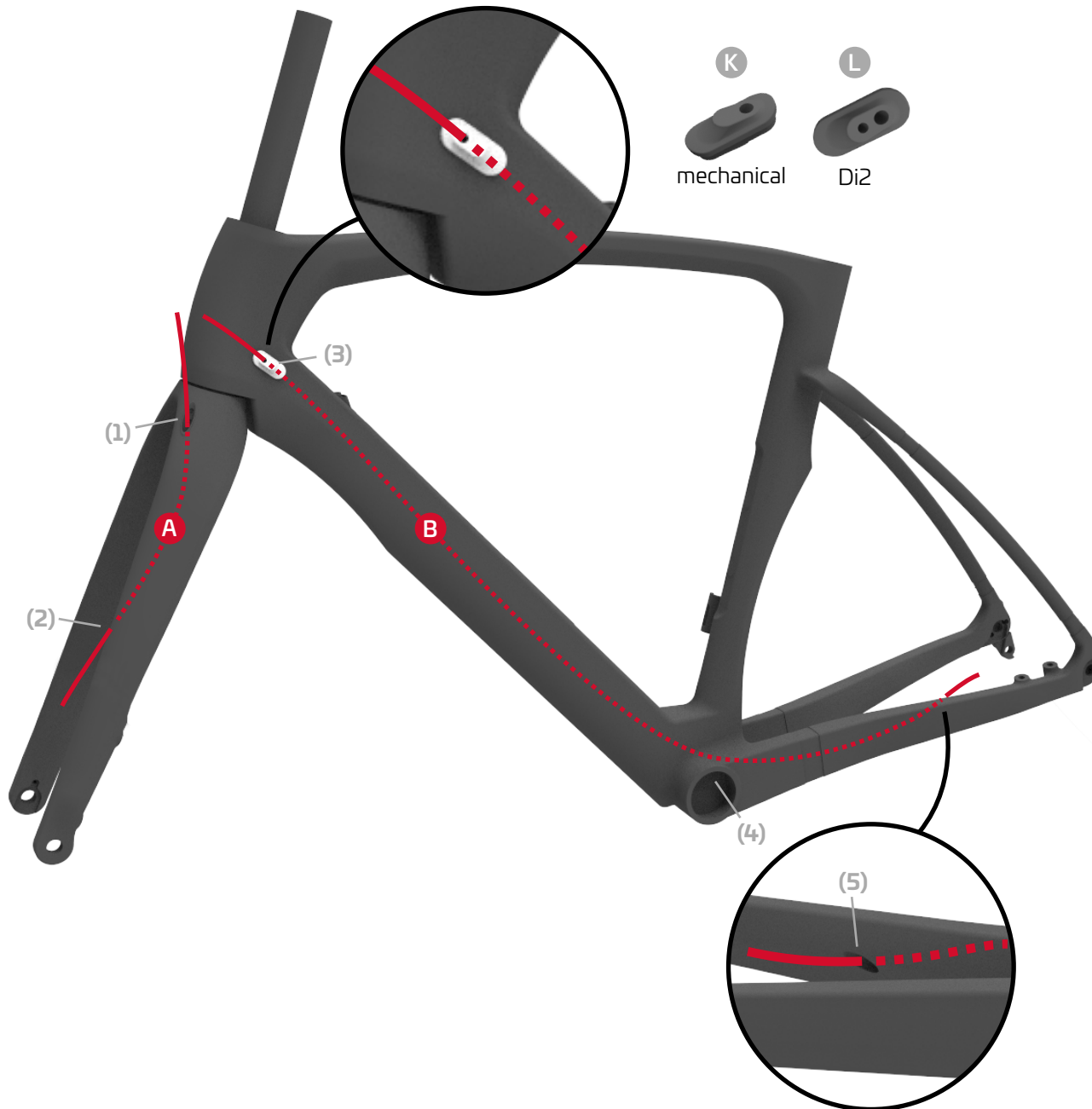
2. Parts included in the BOX



- A Headset
- B Expander
- C Di2 battery adaptor
- D Cable covers X2
- E Clamp
- F Rear thru axle
- G Front thru axle
- H Mini clamp
- I Grommet for SRAM eTap (empty hole)
- J Grommet for Shimano Di2 wire
- K Grommet for rear brake housing
- L Grommet for rear brake housing and Di2 wire
- M Cable stop for rear shifter

Mamba-R

2019 Assembly Guide



3. Cables Map - Brakes

A Front Brake Cable

Cable entry (1) is located on top of fork left side. Thread the cable casing into the hole until you can grab it at the inside fork hole exit (2), then guide it toward brake caliper.

B Rear Brake Cable

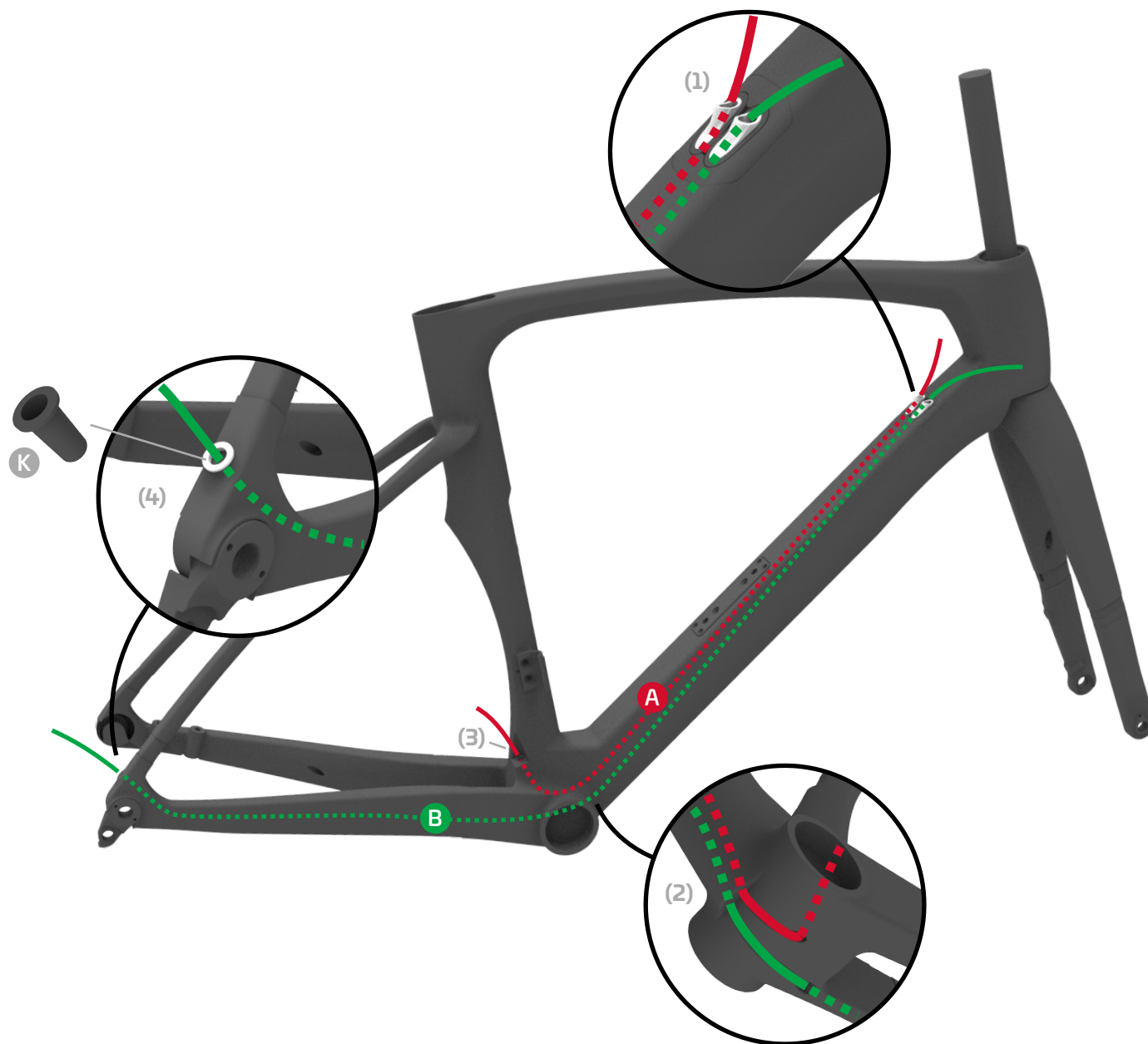
Cable entry (3) is located on top left side down tube. Thread the cable casing into the hole until you can grab it at the bottom bracket exit (4), then guide it toward the inside left chainstay exit hole (5), then the brake caliper.



No special parts or tools needed.

Mamba-R

2019 Assembly Guide



4. Cables Map - Shiftings

A Map Front Derailleur (mechanical)

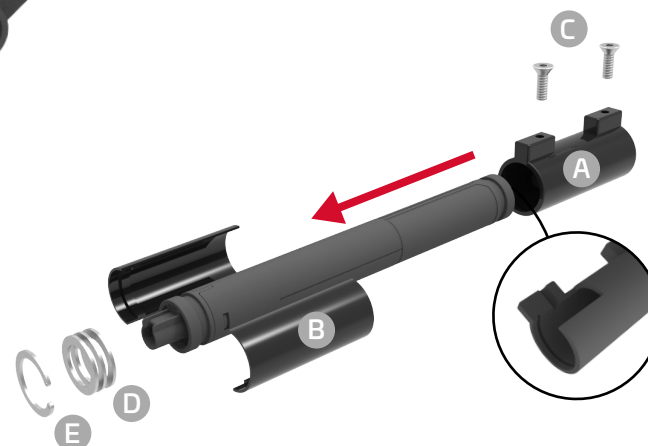
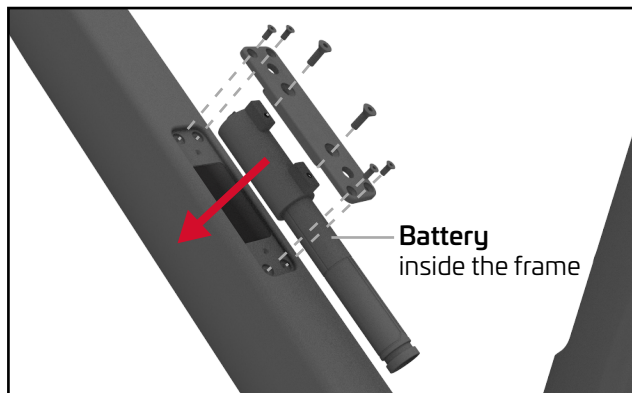
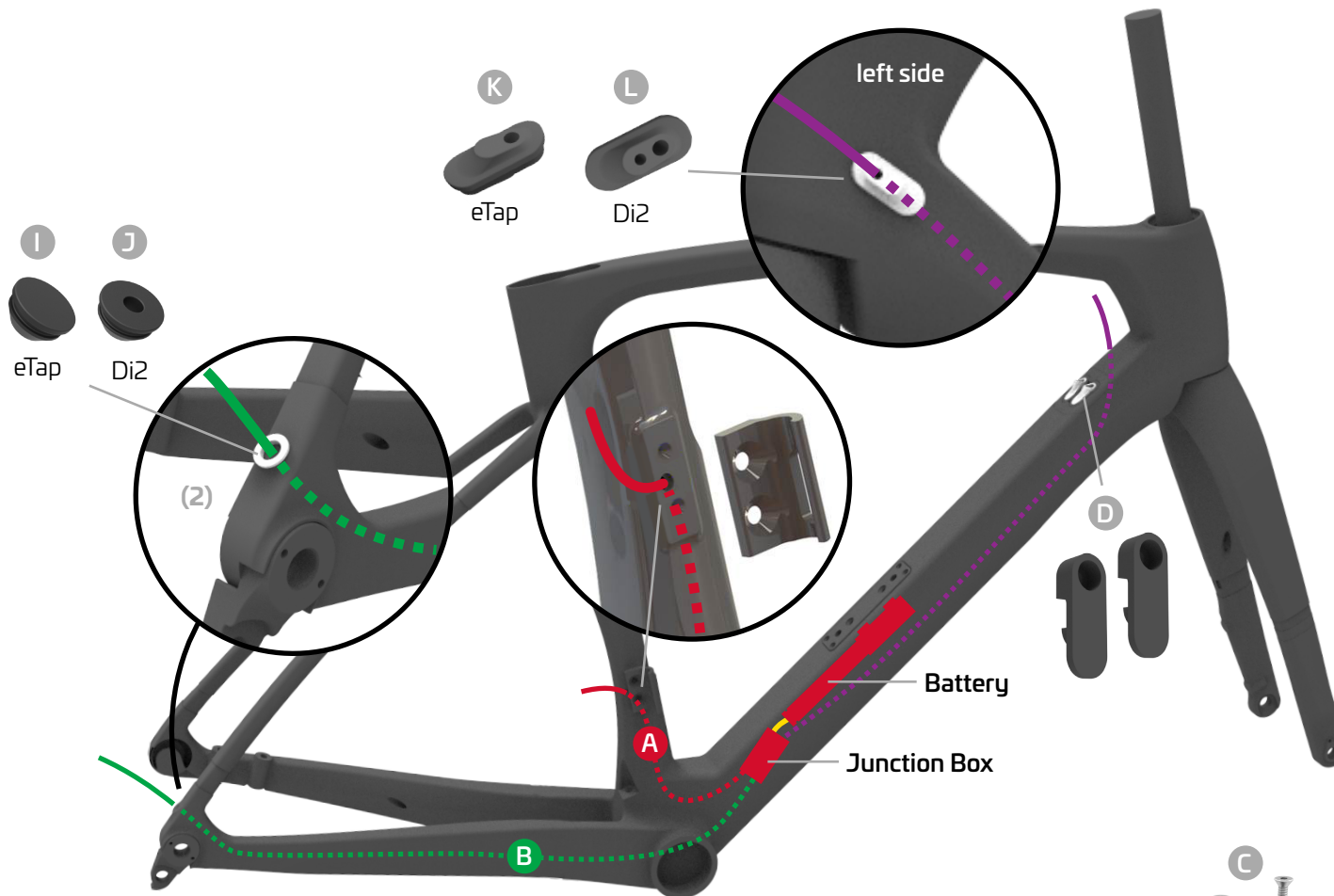
Cable entry **(1)** is located on top of the down tube. Thread the cable casing until you can grab it at the bottom down tube exit **(2)**, then guide it toward front derailleur exit hole **(3)**.

B Map Rear Derailleur (mechanical)

Cable entry **(1)** is located on top of the down tube. Thread the cable casing until you can grab it at the bottom down tube exit **(2)**, then guide it toward rear derailleur exit hole **(4)**.

Mamba-R

2019 Assembly Guide



5. Cables Map - Shiftings

A Map Front Derailleur (electronic)

From the battery junction box, guide it toward front derailleur exit hole (1).

B Map Rear Derailleur (electronic)

From the battery junction box, guide it toward rear derailleur exit hole (2).

— Battery Wire

— Shifting Wire

— Front Derailleur

— Rear Derailleur

A Di2 Battery Holder

B Di2 Battery Collar

C Adaptor Bolts

D Washer

E Internal Circlip

Mamba-R

2019 Assembly Guide

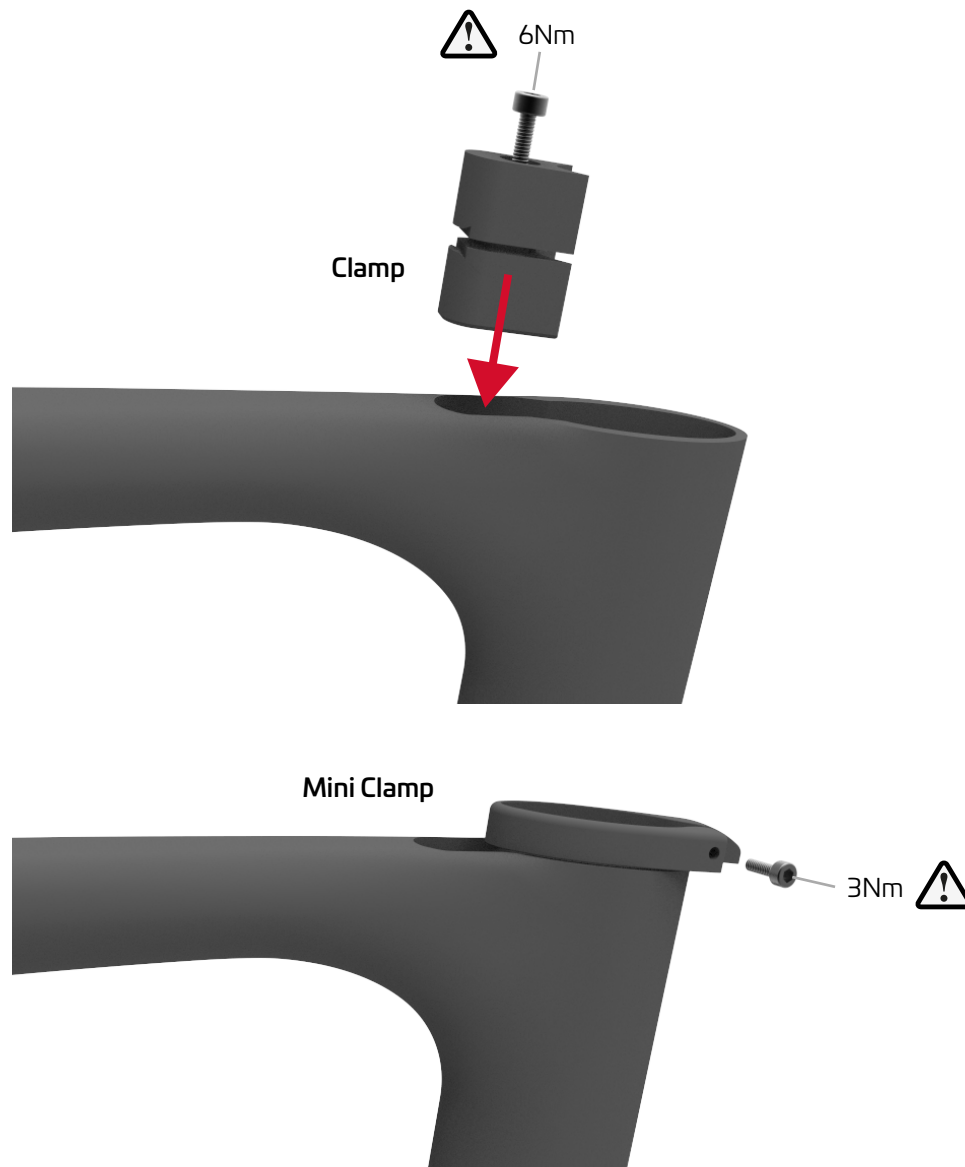


6. Headset Installation

Headset installation is standard.



Adjust the number of spacers to make sure there is no interference between the top cap and head tube.



7. Seatpost Installation

Ceepeo reversible seat post is secured via 2 clamps.

Clamp

Wedge type must be placed inside clamp pocket inside frame, paying attention to have access to Allen key bolt head so you can tighten it.

Mini Clamp

Our Mini-clamp is to be placed on seat post prior to Installation.



The mini clamp remains on seat post when removing it for travel.