



Stinger
2021 Assembly Guide



Stinger

2021 Assembly Guide





TABLE OF CONTENTS

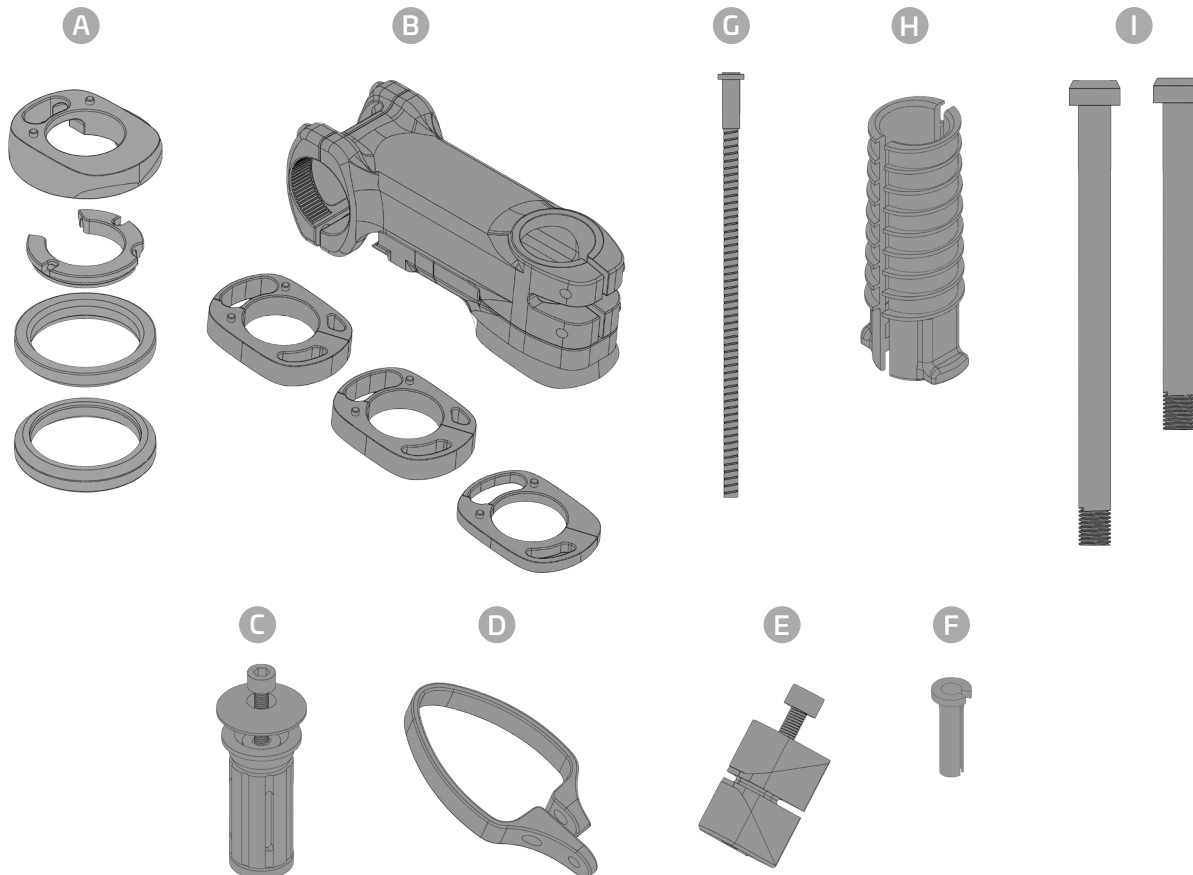
1. Parts included in the BOX.....	4
2. FSA SMR Stem	5
3. Brake Hose Routing	7
4. Electric Cable Routing & Installation	8
5. Mechanical Cables Routing SRAM.....	10
6. Mechanical Cables Routing Shimano	11
7. Mini-Clamp & Clamp Installation	12

Stinger

2021 Assembly Guide

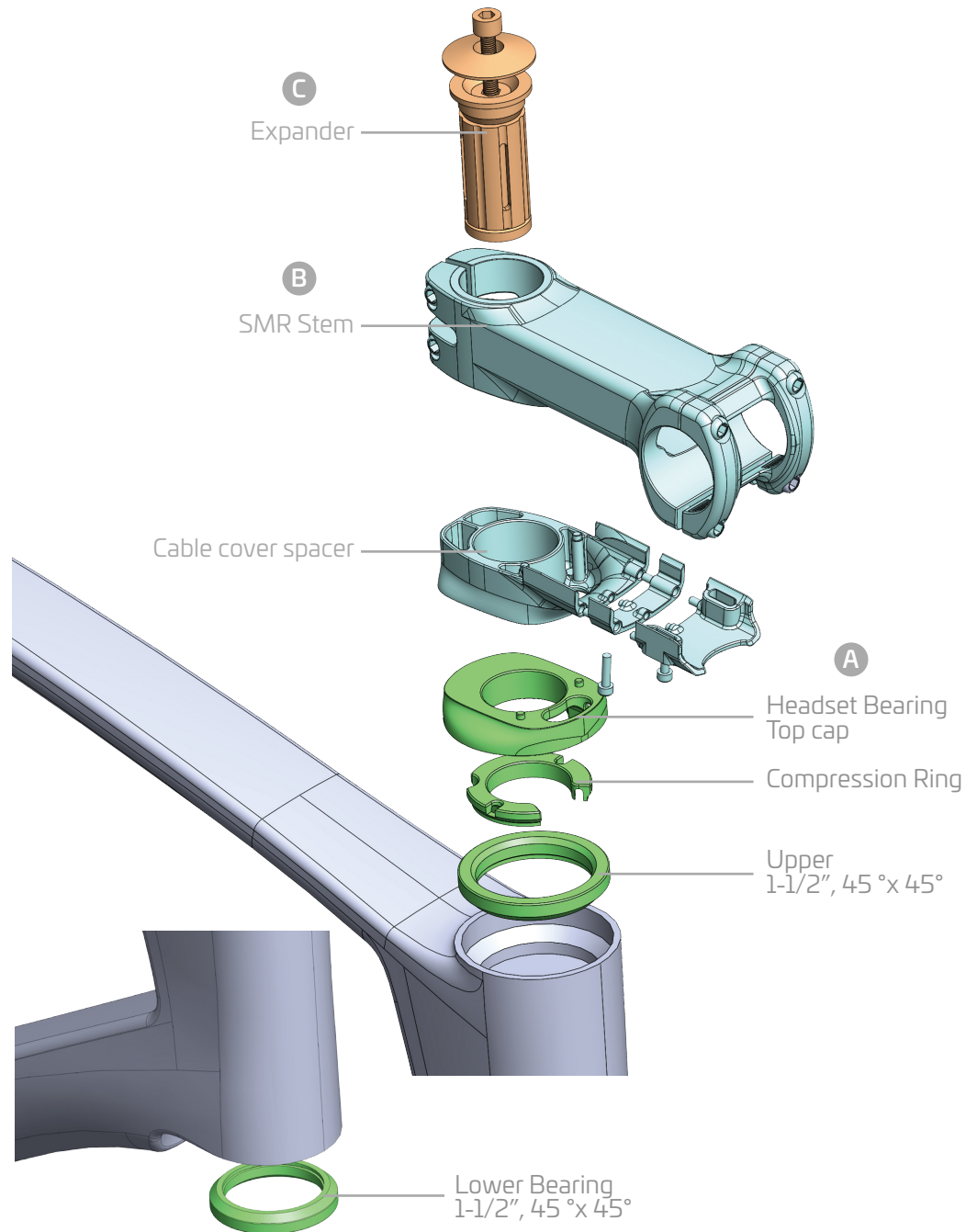


1. Parts included in the BOX



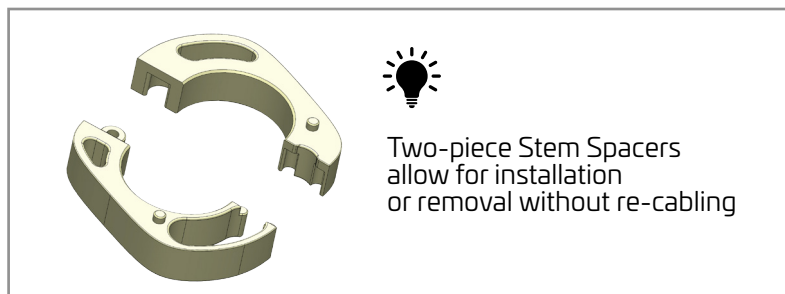
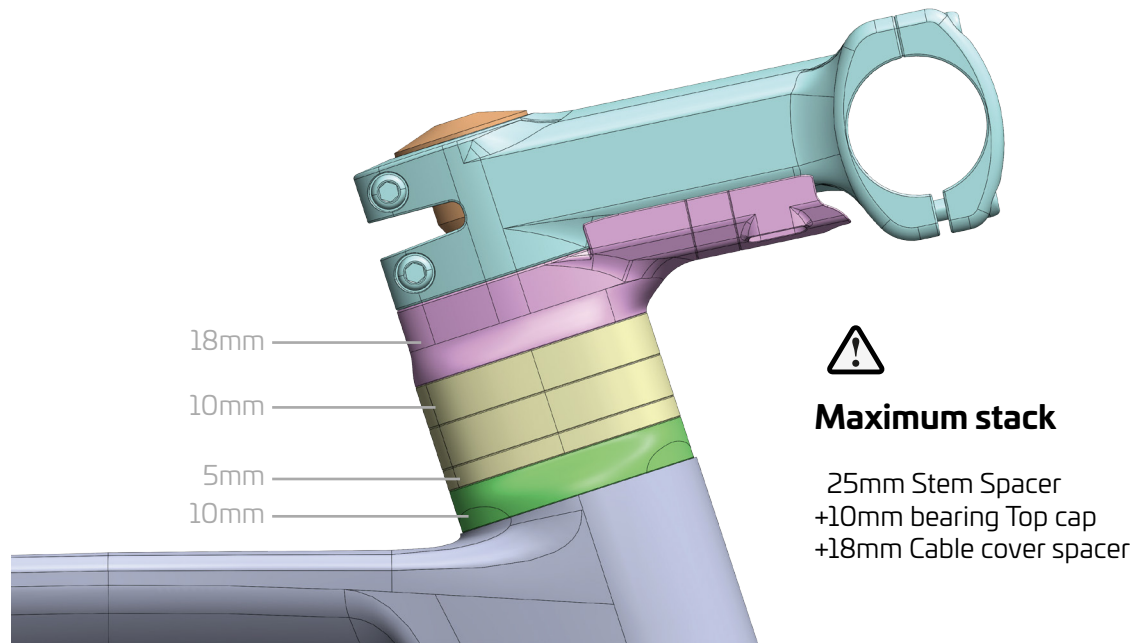
- A** Headset
FSA No55R 1.5" CR STD
- B** Stem & Spacers
FSA SMR Stem, for integration cables
Spacers 1cm X 1pc, 2cm X 2pcs
- C** Expander
For ID 23mm fork
- D** Mini Clamp
Clamp on the setpost
- E** Seat Clamp
- F** Cable Guide
For mechanical routing use
- G** Alloy Cable Stop
For mechanical routing use
- H** Rubber Sleeve
Battery Holder for Shimano Di2
- I** Thru Axles

2. FSA SMR System



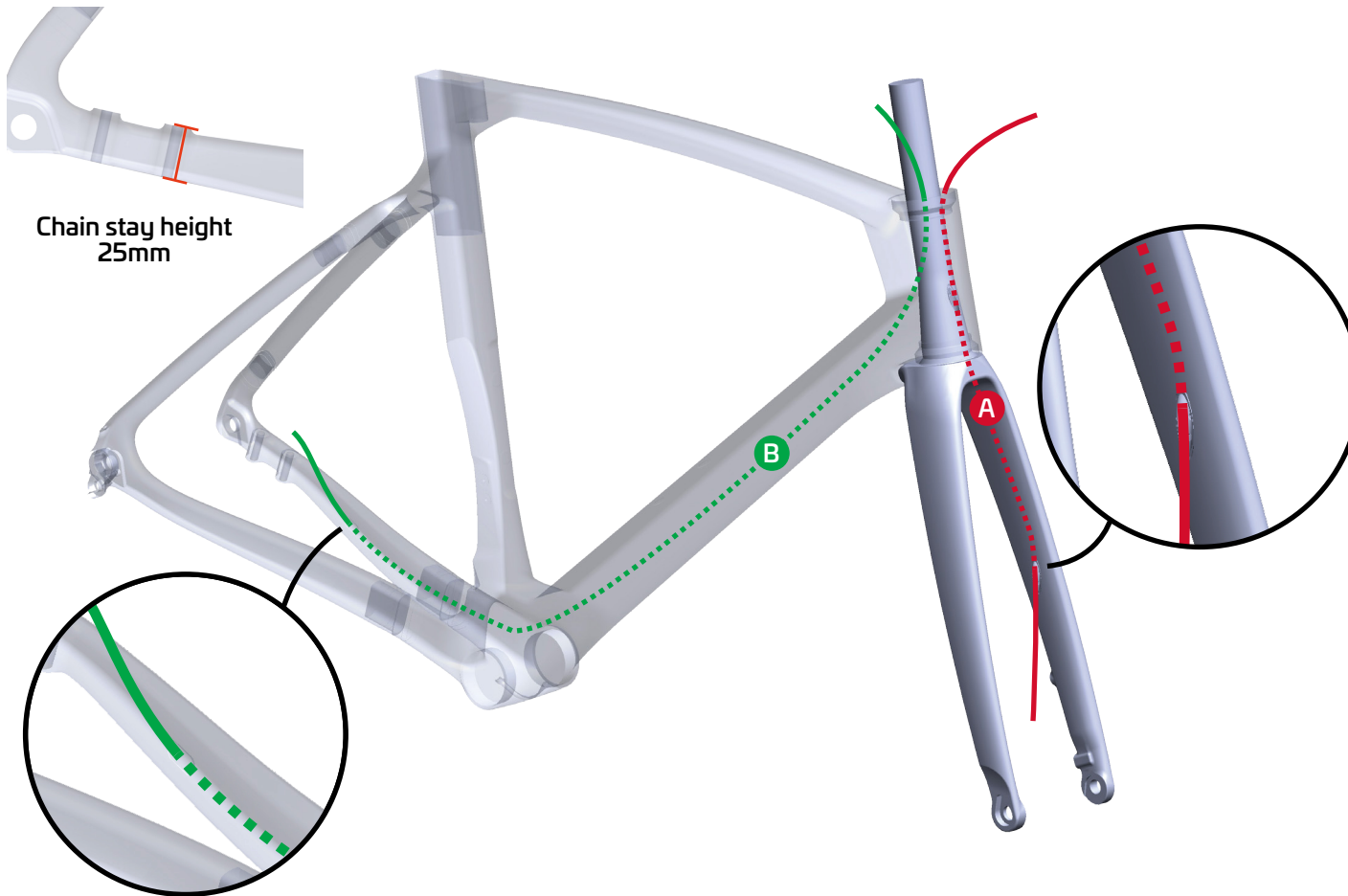


2. FSA SMR System (suite)



Stinger

2021 Assembly Guide



Chain stay height
25mm

3. Brake Hose Routing

A Front Brake Hose

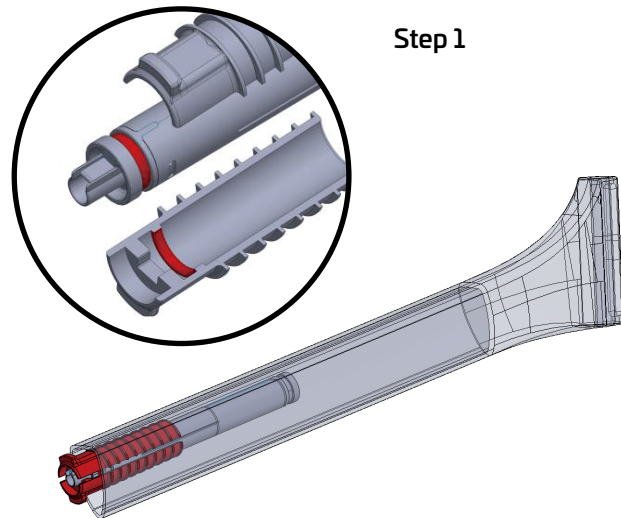
A single brake hose can pass through the fork steerer, so it doesn't require a connector bushing.

B Rear Brake Hose

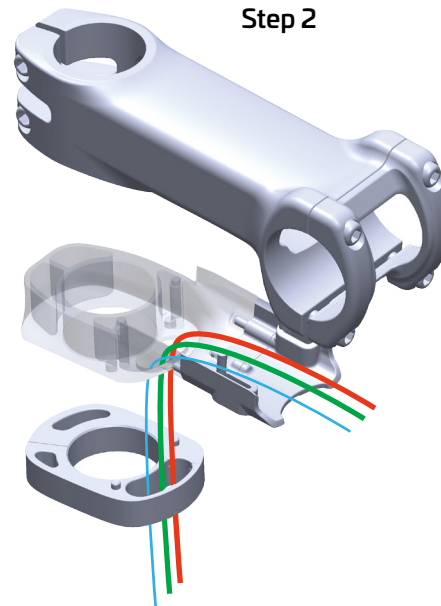
If the rear brake is on the right hand, route the hose around the drive side of the fork inside the headtube.



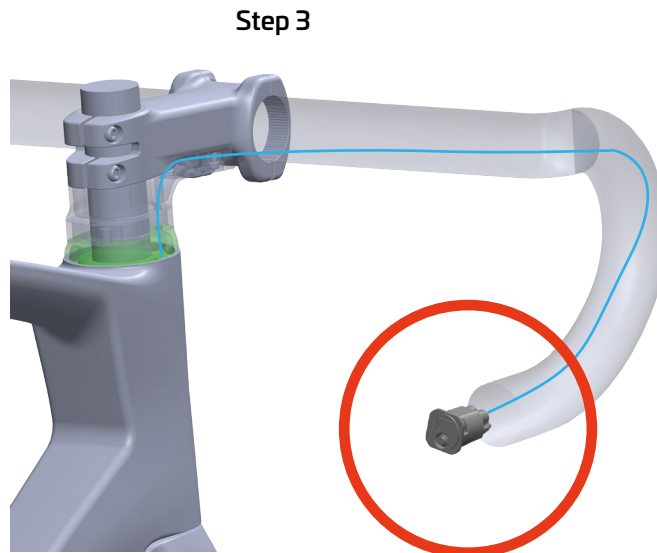
These routing illustrations are intended as installation instructions only. For both hydraulic and mechanical disc brakes, please refer to that component's website to find further information.



Step 1



Step 2



Step 3

4. Electric Wire Routing & Installation

Step 1

Secure battery in the Di2 Battery Collar.

Make sure to align the grooves.

Step 2

Insert all cables through the compression ring opening, and upper bearing and bearing cap.

Step 3

Install Di2 Junction-A in dropbar.

- Front Brake Hose
- Rear Brake Hose
- Di2 Wire



4. Electric Wire Routing & Installation (suite)

Step 4

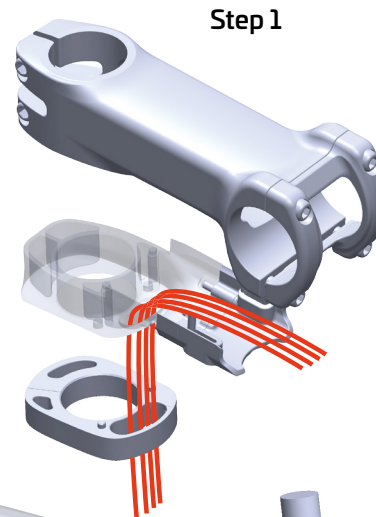
Step 4

Connect the Di2 wires.



— Di2 Wire

5. Mechanical Cable Routing & Installation - **SRAM**



Step 1

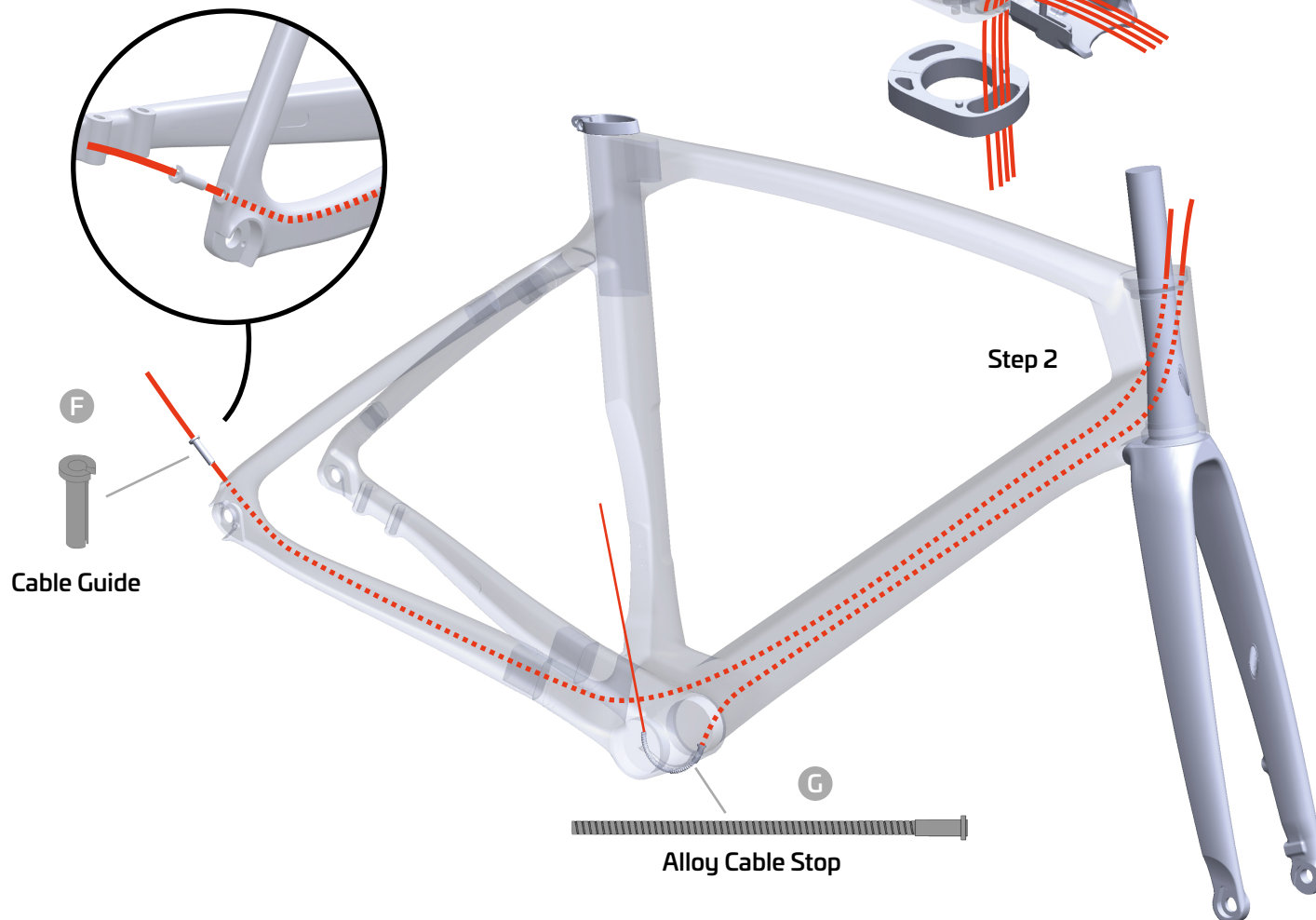
All cables go through the compression ring opening, the upper bearing and the bearing cap.

Step 2

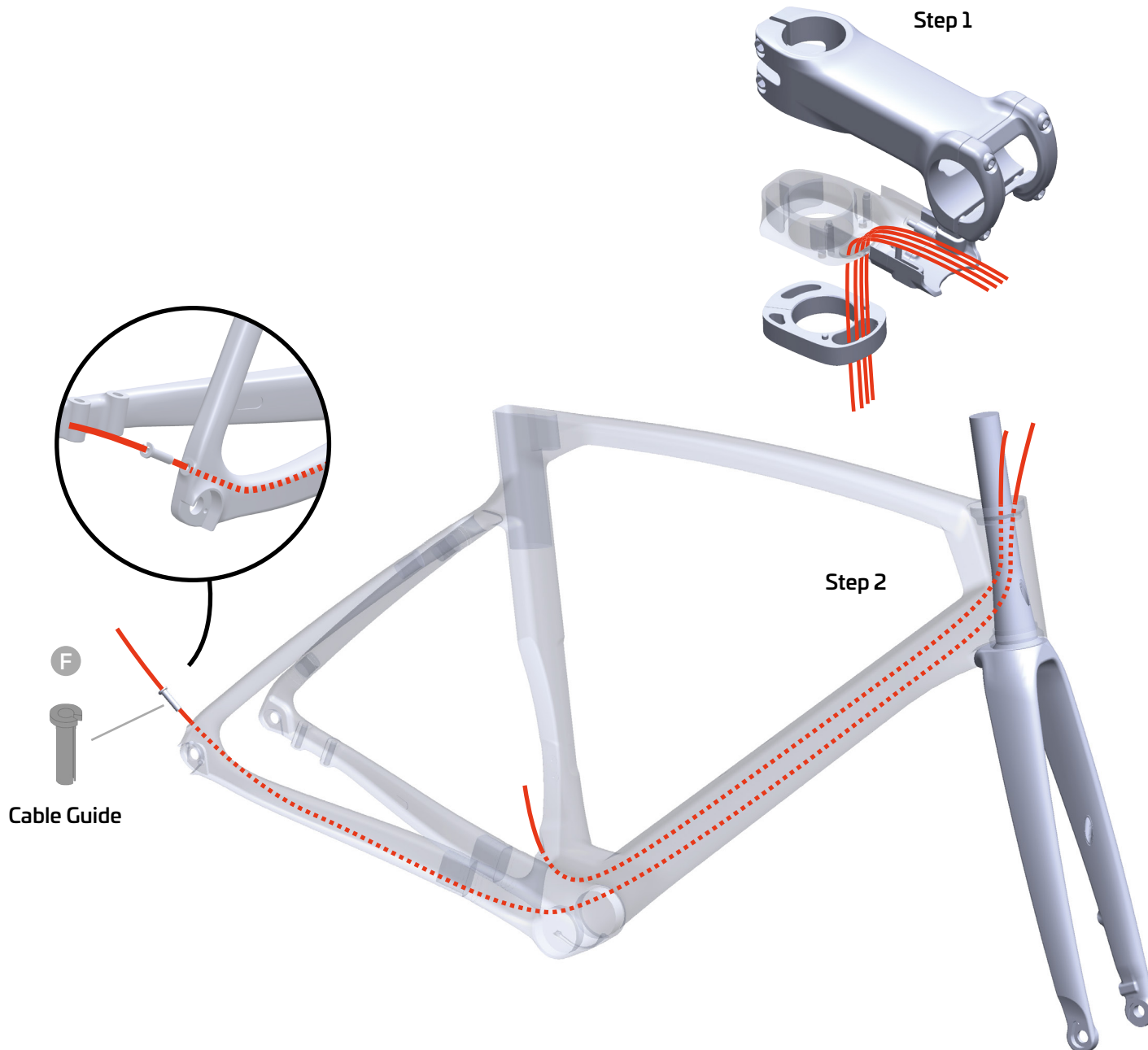
Feed the cables through the frame.



For a SRAM front derailleur, there needs to be an alloy cable stop.



6. Mechanical Cable Routing & Installation - **Shimano**



Step 1

All cables through the compression ring opening, and upper bearing and bearing cap.

Step 2

Feed the cables through the frame.



For Shimano groupsets, all mechanical cable hoses connect directly to the derailleurs.

7. Mini Clamp & Clamp Installations

The seat post is secured via two clamps.

Mini Clamp

The mini clamp should be mounted on the seatpost prior to installing the seatpost. It has two functions:

1. Maintain saddle height
2. Install a race number board



The mini clamps remains on the seatpost when you remove it.

Clamp

The seat clamp wedge should be placed inside the frame's clamp pocket after inserting the seatpost. Make sure you can access the Allen key bolt head for tightening (6Nm).

