



Peak

2025 Assembly Guide



Peak

2025 Assembly Guide





TABLE OF CONTENTS

1. Parts Included In the Box.....	4
2. Brake Hose Routing.....	5
3. Electric Wire Routing & Installation (suite).....	6
4. SHIMANO battery assemble.....	7
5. Headset.....	8
6. FSA SMR II system.....	9
7. Seatpost Clamp.....	10
8. Expander Plug.....	11

Peak

2025 Assembly Guide



1. Parts Included In the Box



- A Headset
- B Expander
- C Grommet for RD of SHIMANO
- D Grommet for SRAM of SRAM
- E Grommet for rear brake
- F TOKEN thru-axe front & rear
- G Foam tube
- H FSA SMR II stem
- I Seat post clamp
- J Screws for seat post clamp



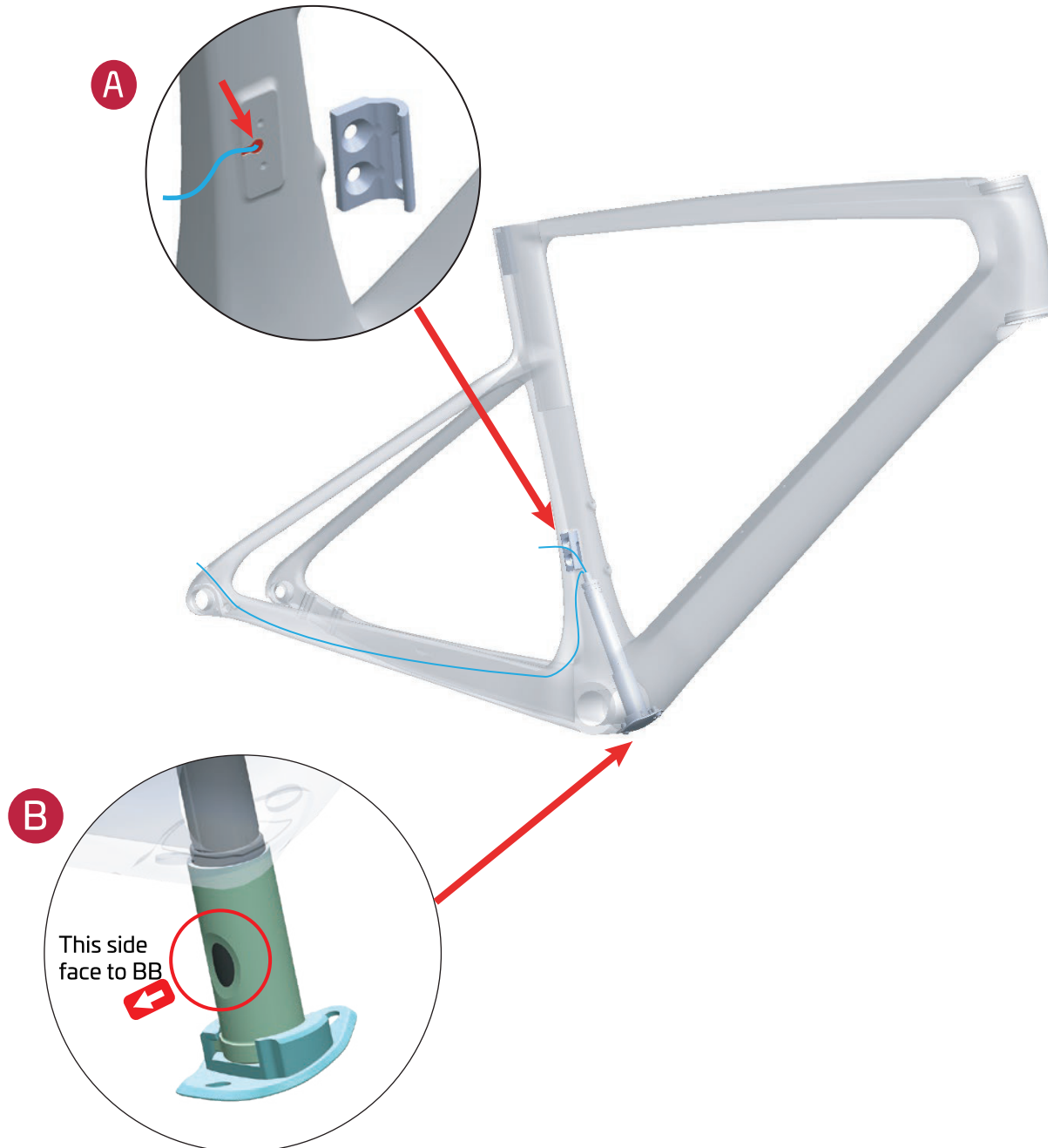
3. Electric Wire Routing & Installation (suite)

— Di2 Wire

- A** Remove the front derailleur hanger, let the cable exit through the inner hole, then reinstall the hanger to its original position.

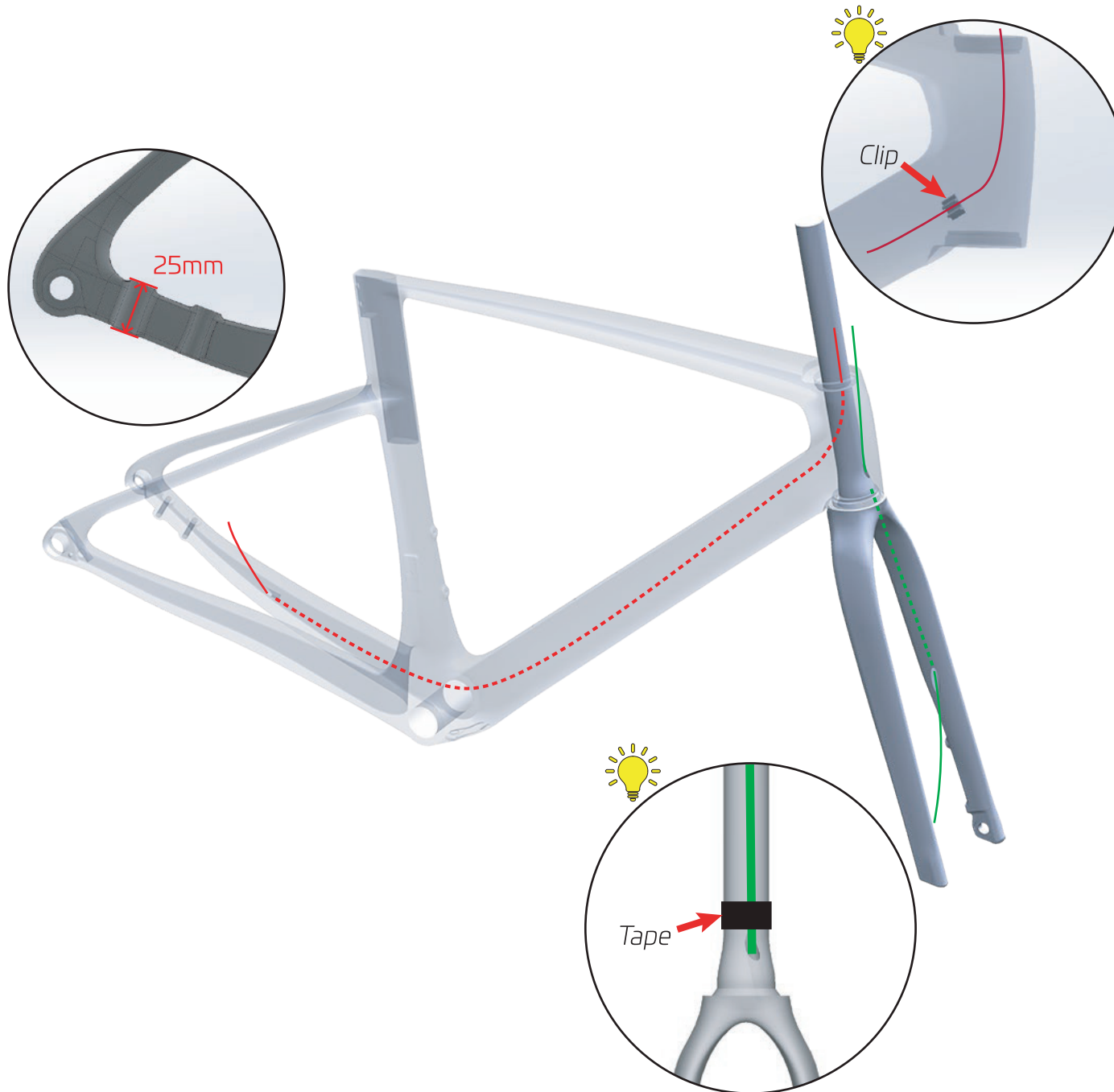
- B** Refer to the next page for instructions on installing the SHIMANO battery.

Note: The end with the notch faces the bottom bracket (BB).



Peak

2025 Assembly Guide



2. Brake Hose Routing

A Rear Brake Hose

Please ensure the rear brake cable is installed on the clip inside the head tube.

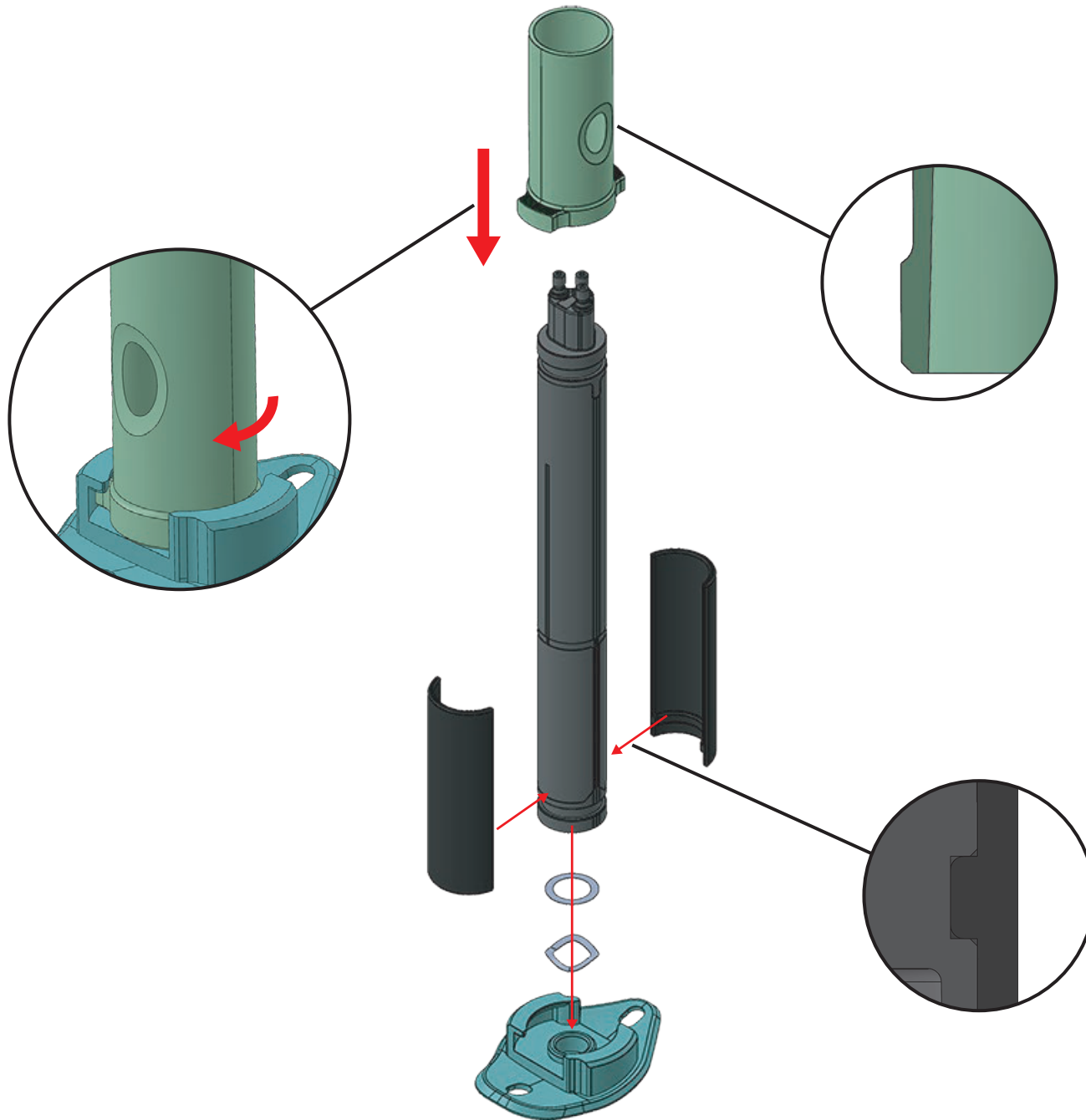
B Rear Brake Hose

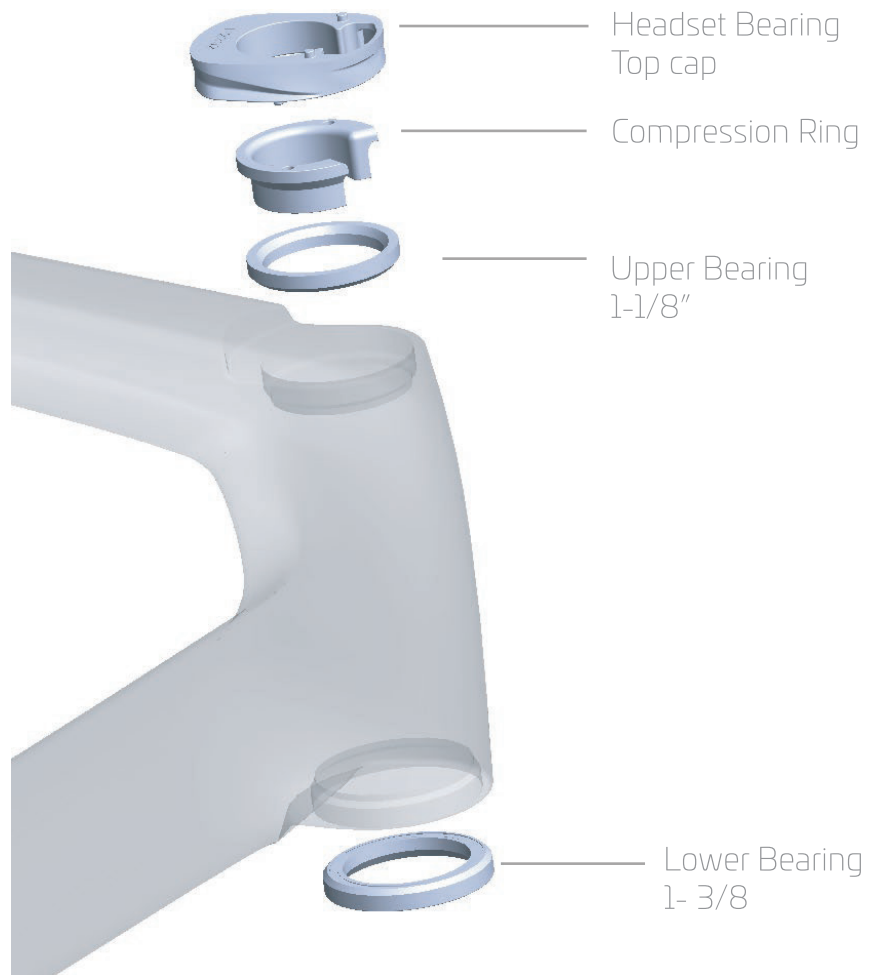
The front brake cable must be secured with tape to the fork steerer tube, positioned as shown in the left diagram.

 IMPORTANT



4. SHIMANO battery assemble

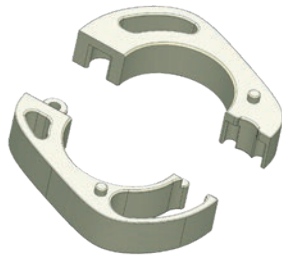
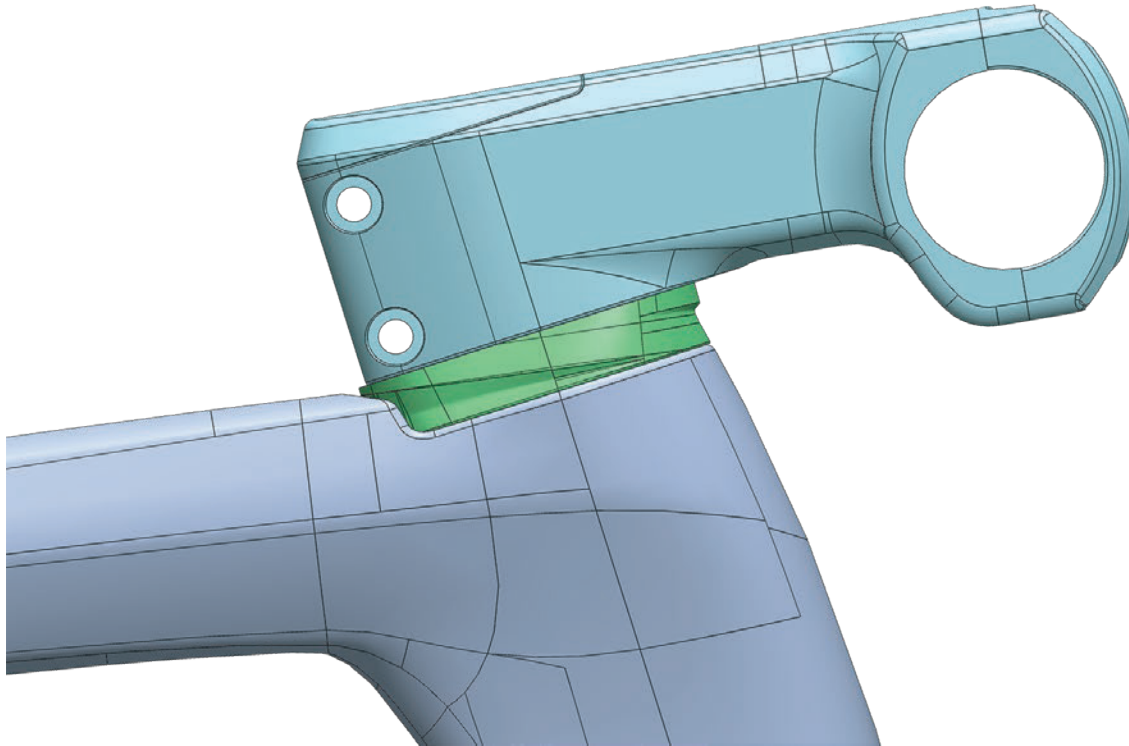




5. Headset



6. FSA SMR II System (suite)



Two-piece Stem Spacers
allow for installation
or removal without re-cabling



7. Seatpost Clamp

